



# PUI audio

WHEN IT NEEDS TO BE HEARD





# WHEN IT NEEDS TO BE HEARD.

PUI Audio is the choice of thousands of audio product customers, from garage entrepreneurs to the world's leading medical device manufacturers. Every day we exceed our customers' expectations with intricate testing, superior customer service, and informed local representatives and engineers; this is what sets us apart and it's a big reason why PUI Audio should be your only choice for audio solutions.

## COMMITTED TO QUALITY

PUI Audio strives to deliver world-class audio products and services. We are committed to satisfying your requirements, while continually improving quality.

We are ISO 9001:2015 certified. Every product is 100% inspected. Utilizing our anechoic sound chamber and state of the art B&K SoundCheck™ test system, instant test results ensure every product we ship meets exacting specifications. A complete test history for each product is maintained and achieved.

**CUSTOMER FOCUSED**

**COLLABORATIVE**

**PASSIONATE**

**ACCOUNTABLE**

**ETHICAL**

**SENSE OF URGENCY**

[puiaudio.com](http://puiaudio.com)

For customized products, call or email us  
937.415.5901 - audio@puiaudio.com

When it needs to be heard in a medical setting.

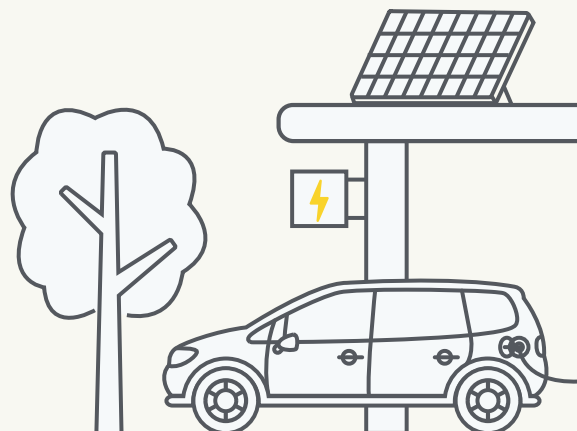


PUI Audio can power the patient experience, ensuring vital information is communicated and understood, expediting needs and keeping the focus on patient care.

**SERVING**  
**KEY INDUSTRIES**

**MEDICAL**  
**INDUSTRIAL**  
**SECURITY**  
**CONSUMER**

When it needs to be heard in a industrial setting.



PUI Audio ensures alerts and monitors are heard when sound is responsible for ensuring safety and accuracy.

When it needs to be heard to  
keep you safe.



Audio is a crucial component in security  
devices and settings to keep you safe and  
aware of critical situations.

When it needs to be heard at  
home or on the go.

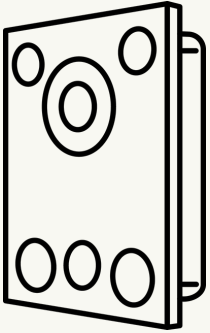


PUI knows consumer electronics. Whether it  
is in your home or with you wherever you go,  
PUI knows that notifications, sound quality  
and sensory alerts are important on all of  
your consumer electronics and devices.

# Find a product

We've made it even easier for you to find what you are looking for. Our new parametric web search function will help you zero in on exactly the products you need and locate specifications and applicable use cases.

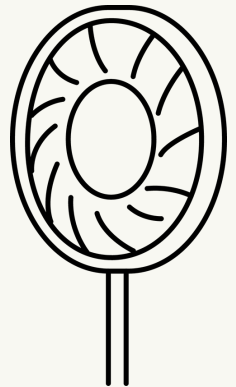
## MICROPHONES



Complementing PUI Audio's sound-generating products, we offer a full line of electret condenser microphones and MEMS microphones, both analog and digital. With sizes as small as 2.75 x 1.85 x 0.90mm, PUI Audio's microphone line-up makes finding the right solution easy.

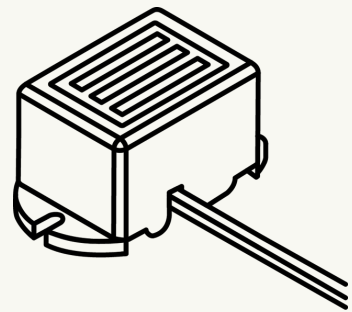
## SPEAKERS & RECEIVERS

PUI Audio's speaker selection includes everything from our 13mm SMD speaker to 5-inch, full-range speakers and larger. When an application requires a wide frequency range, music or voice reproduction, our speakers will answer the call.



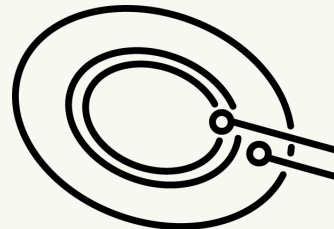
## INDICATORS

PUI Audio's Indicators are a simple, self-driven, drop-in solution for applications requiring a simple tone or siren sound. Our indicators are designed to offer the most efficient solution by combining the useful balance of fit, form, and function.



## BENDERS

The simplest of PUI Audio's products, our piezo benders, offer the perfect solution where space is at a premium, multiple tones are required, and high output, as well as low power consumption, are a must. These externally driven elements are found in all varieties of products, from media players to smoke detectors. They can even be used as switches and contact microphones.



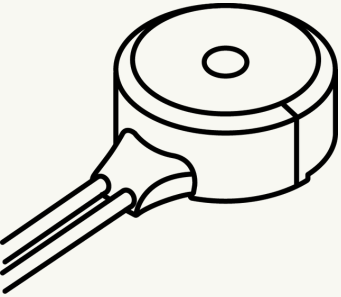
**Brainstorm with  
an Engineer**



# Find a product

We've made it even easier for you to find what you are looking for. Our new parametric web search function will help you zero in on exactly the products you need and locate specifications and applicable use cases.

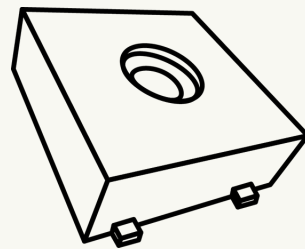
## HAPTICS



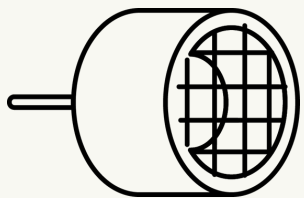
Sometimes, it needs to be felt more than it needs to be heard. And for that, PUI has added haptic technology to our lineup of components, ensuring that when a tactile response or alert is necessary it can be felt clearly.

## TRANSDUCERS

PUI Audio's Transducers provide convenient solutions to difficult audio requirements. Presented in a variety of styles, PUI Audio's transducers allow product designers to leverage the power of their own drive circuit or processor to achieve the exact tone, or multiple tones, their design requires, with the ability to vary SPL.



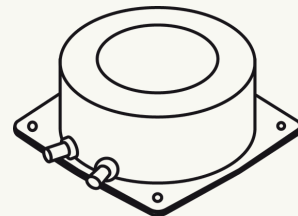
## ULTRASONICS



Although the typical adult human hearing range is between 20 Hz and 20,000 Hz, some audio devices require the ability to be heard outside this range. For example, products designed to alert animals or children, teens or other subsets are sometimes necessary to get some messages heard. This is where ultrasonic sound comes into play, and PUI Audio offers solutions for this as well.

## EXCITERS

If you are looking for an approachable way to enhance your audio, consider an exciter. Explore PUI Audio's selection of audio exciters, and add clarity, tone and crispness to your audio. Our broad offering of exciters to fit any of your needs within audio.



**Brainstorm with  
an Engineer**



## SPEAKERS FULL RANGE AUDIO OUTPUT



**AS01008MR-2-R**  
42.9 H x 10 W x 10 L

Frequency range:  
0.96-20kHz

Max input: 0.5 W  
Rated input: 0.3 W



**AS01508AO-WP-R**  
3 H x 11 W x 15 L

Frequency range:  
0.50-14kHz

Max input: 1 W  
Rated input: 0.7 W



**AS03204MS-3-R**  
16.5 H x 32.7 W x 32.7 L

Frequency range:  
0.2-20kHz

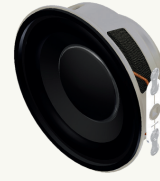
Max input: 4 W  
Rated input: 3 W



**AS04004PO-WR-R**  
13 H x 28.4 W x 40 L

Frequency range:  
0.37-20kHz

Max input: 4 W  
Rated input: 2 W



**AS04004PR-R**  
18.3 H x 40 W x 40 L

Frequency range:  
0.1-20kHz

Max input: 4 W  
Rated input: 3 W



**AS05004PS-2-F-WP-R**  
50 H x 18.5 W x 50 L

Frequency range:  
200-19000kHz

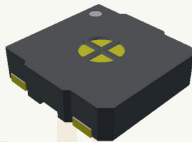
Max input: 3 W  
Rated input: 4 W



**AS05008MR-4-R**  
7.2 H x 50 W x 50 L

Frequency range:  
0.35-20kHz

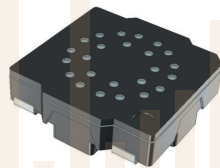
Max input: 2 W  
Rated input: 1.5 W



**SMS-1508MS-HT-R**  
4 H x 15 W x 15 L

Frequency range:  
0.4-10kHz

Max input: 1 W  
Rated input: 0.8 W



**SMS-2030MS**  
4.7 H x 20 W x 20 L

Frequency range:  
760-10000kHz

Max input: 0.8 W  
Rated input: 0.5 W

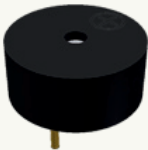
## SILENT SUBWOOFER EXCITERS



**ASX02608-R**  
EXCITER 1.5W 80HM 82DB 650HZ



## TRANSDUCERS EXTERNALLY DRIVEN DEVICES CAPABLE OF EMITTING MULTIPLE TONES/FREQUENCIES



**AT-0927-TT-2-R**  
8 H x 9 W x 9 L

Frequency:  
2,730 ± 500Hz

Voltage range:  
2 - 4 Vp-p



**AT-1438-TWT-R**  
11.3 H x 13.8 W x 13.8 L

Frequency:  
3800 ± 300Hz

Voltage range:  
1 - 20 Vp-p



**AT-2440-TWT-R**  
13.5 H x 24 W x 24 L

Frequency:  
4,000 ± 500Hz

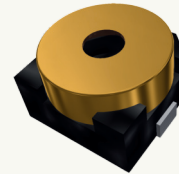
Voltage range:  
1 - 30 Vp-p



**AT-2830-TWT-R**  
16.2 H x 28.5 W x 28.5 L

Frequency:  
3,000 ± 500Hz

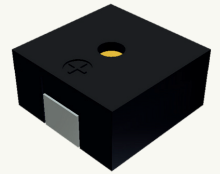
Voltage range:  
3 - 28 Vp-p



**SMT-0340-T-R**  
2.1 H x 3.2 W x 3.2 L

Frequency:  
4,000 ± 500Hz

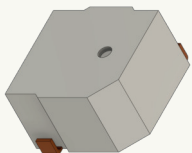
Voltage range:  
2 - 4 Vp-p



**SMT-0440-T-R**  
2 H x 4 W x 4 L

Frequency:  
4,000 ± 500Hz

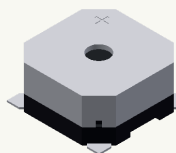
Voltage range:  
2 - 4 Vp-p



**SMT-0540-T-10-R**  
5 H x 3 W x 5 L

Frequency:  
4,000 ± 000000Hz

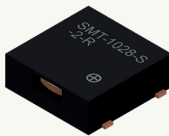
Voltage range:  
2 - 4 Vp-p



**SMT-0827-T-HT-R**  
4 H x 8.5 W x 8.5 L

Frequency:  
2,700 ± 500Hz

Voltage range:  
2 - 5 Vp-p



**SMT-1028-S-2-R**  
3.5 H x 10 W x 10.8 L

Frequency:  
2,830 ± 500Hz

Voltage range:  
3 - 4.5 Vp-p

NOTE: ALL PRODUCT DIMENSIONS ARE MEASURED IN MILLIMETERS

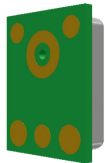
## MICROPHONES



**AMM-2742-T-WP-R**  
1 H x 1.85 W x 2.75 L

Directivity:  
Omni-directional

Sensitivity:  
-42 ± 1dB



**AMM-3738-B-R**  
1.1 H x 2.95 W x 3.76 L

Directivity:  
Omni-directional

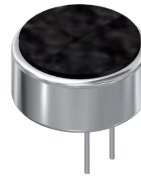
Sensitivity:  
-38 ± 1dB



**AMM-3742-T-WP-R**  
1.2 H x 2.95 W x 3.76 L

Directivity:  
Omni-directional

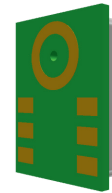
Sensitivity:  
-42 ± 1dB



**AOM-4544P-2-R**  
9.5 H x 9.7 W x 9.7 L

Directivity:  
Omni-directional

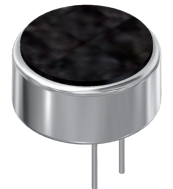
Sensitivity:  
-44 ± 2dB



**DMM-4026-B-I2S-R**  
1 H x 3 W x 4 L

Directivity:  
Omni-directional

Sensitivity:  
-26 ± 1dB



**POM-2246P-C33-R**  
4.2 H x 6 W x 6 L

Directivity:  
Omni-directional

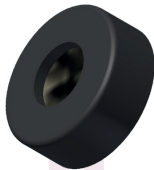
Sensitivity:  
-46 ± 3dB



**POM-2739L-HD3-R**  
2.7 H x 6 W x 6 L

Directivity:  
Omni-directional

Sensitivity:  
-39 ± 3dB



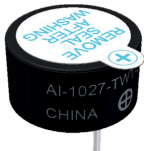
**POW-1644L-B-R**  
1.6 H x 6 W x 6 L

Directivity:  
Omni-directional

Sensitivity:  
-44 ± 3dB

## INDICATORS

## INTERNALLY DRIVEN DEVICES EMITTING A SINGLE TONE



**AI-1027-TWT-5V-R**  
9.5 H x 9.6 W x 9.6 L

Frequency:  
2,700 ± 200Hz

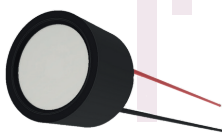
Voltage range:  
3 - 7 VDC



**AI-1440-TWT-12V-R**  
13 H x 13.8 W x 13.8 L

Frequency:  
4,000 ± 500Hz

Voltage range:  
3 - 16 VDC



**AI-1450-T-WP-LW80-R**  
14 H x 9.5 W x 14 L

Frequency:  
5,000 ± 500Hz

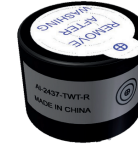
Voltage range:  
9 - 16 VDC



**AI-1622-TWT-12V-R**  
21 H x 16 W x 16 L

Frequency:  
2,200 ± 300Hz

Voltage range:  
8 - 15 VDC



**AI-2437-TWT-R**  
23 H x 24 W x 24 L

Frequency:  
3,700 ± 500Hz

Voltage range:  
3 - 16 VDC



**API-4260-LW150-2-R**  
25 H x 42 W x 50 L

Frequency:  
N/A ± N/A Hz

Voltage range:  
7 - 24 VDC



**SMI-1027-TW-3V-R**  
5 H x 49.7 W x 9.7 L

Frequency:  
2,700 ± 300Hz

Voltage range:  
2 - 5 VDC



**X-2629-TWT-FP-R**  
34.3 H x 26 W x 26 L

Frequency:  
3,000 ± 100Hz

Voltage range:  
9 - 14 VDC

NOTE: ALL PRODUCT DIMENSIONS ARE MEASURED IN MILLIMETERS



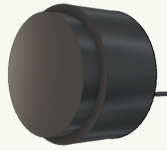
## ULTRASONICS



**UB161M7**  
7.2 H x 50 W x 50 L

Resonant Frequency:  
1700 kHz

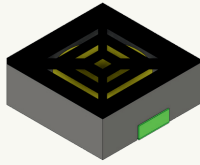
Max input: 100 W



**UTR-1440K-TT-R**  
9 H x 14.4 W x 14.4 L

Resonant Frequency:  
40 kHz

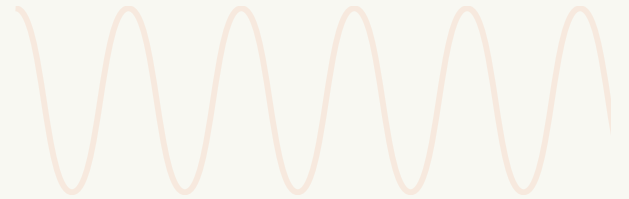
Max input: 140 W



**SMUTR-1040K-TT**  
3.5 H x 10 W x 10 L

Resonant Frequency:  
40 kHz

Max input: 30 W



## PIEZO BENDERS



**AB1070B**  
Bender diameter: xx  
Total thickness: 0.xx

Resonant frequency:  
7,000 ± 600 Hz

Capacitance:  
10000 ± 30%pF



**AB1541B-LW100-R**  
Bender diameter: xx  
Total thickness: 0.xx

Resonant frequency:  
4,100 ± 500 Hz

Capacitance:  
8,000 ± 30%pF



**AB2725S**  
Bender diameter: xx  
Total thickness: 0.xx

Resonant frequency:  
2,500 ± 300 Hz

Capacitance: 45,000 ±  
25%pF



**AB3526B**  
Bender diameter: xx  
Total thickness: 0.xx

Resonant frequency:  
2,600 ± 500 Hz

Capacitance:  
3,000 ± 30%pF

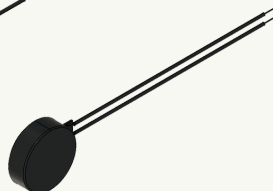
## HAPTICS



**HD-EMB1806-LW32-R**  
6 H x 6 W x 17.5 L

Voltage range:  
1 - 1.6 Vp-p

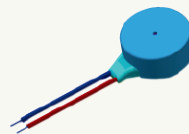
Operating Temp:  
-30.00° to 70.00°



**HD-EMC1003-LW40-R**  
3 H x 10 W x 10 L

Voltage range:  
2.5 - 3.5 Vp-p

Operating Temp:  
-20.00° to 70.00°



**HD-LA0803-LW10-R**  
3.2 H x 8 W x 8 L

Voltage range:  
2 Vp-p

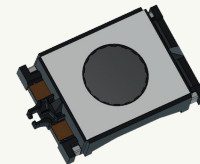
Operating Temp:  
-20.00° to 70.00°



**HD-VA2527**  
27 H x 25 W x 25 L

Voltage range:  
1 - 3 Vp-p

Operating Temp:  
0.00° to 50.00°



**HD-VA3222**  
7.2 H x 22 W x 32 L

Voltage range:  
0.5 - 1.5 Vp-p

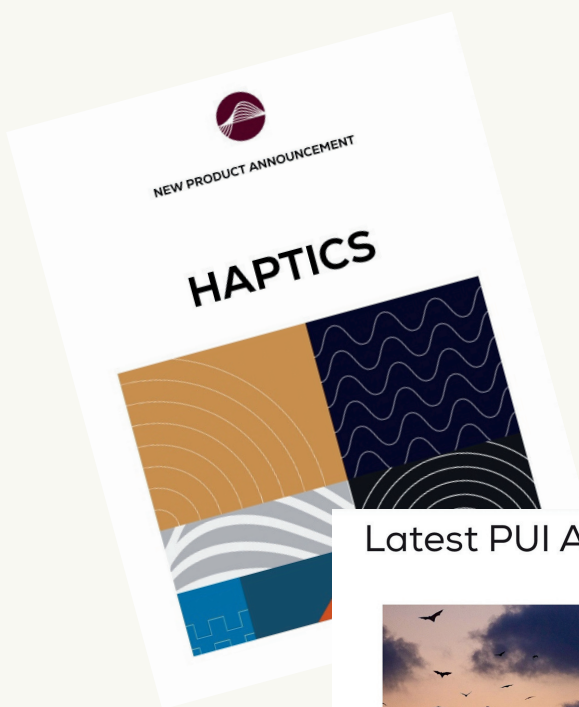
Operating Temp:  
-40.00° to 85.00°

NOTE: ALL PRODUCT DIMENSIONS ARE MEASURED IN MILLIMETERS

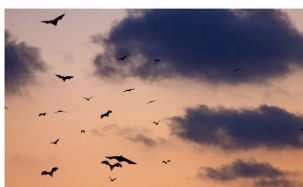
# Explore the PUI Resource Library

The PUI Resource Library is full of industry knowledge and engineering expertise to help you dive deep for deeper context and understanding into your projects.

- Explore whitepapers
- Watch tech talk and instructional videos
- Read articles and trends
- Be inspired by case studies and results
- Sign up for our newsletter and stay connected with our engineering team

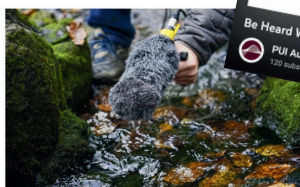


## Latest PUI Audio News



Innovations in ultrasound are pushing PUI Audio customers into new territory

[READ MORE](#)



Three Unique Ways Our Clients are Using Microphones to Collect More Than Voices

[READ MORE](#)

[Visit the PUI Resource Library!](#)





# CUSTOMIZE OUT OF THE BOX SOLUTIONS

## WHY CUSTOMIZE

Every project is different, and when a standard off-the-shelf solution doesn't quite give the results you've been looking for, PUI Audio is here to help create a solution that fits your exact need. Form, Fit, and Function are primary reasons to consider a customized product, and incorporating a unique audio profile in your product can help establish a distinct differentiation in the marketplace.

Benefits of which include:

- Brand Recognition
- New or Exclusive features
- A Unique Sound
- Improved Perception of Quality
- Enhanced User Experience
- Sound Optimization

## HOW TO CUSTOMIZE

Regardless of the application, we'll help you develop the solution. And getting started is simple – just give us a call or send us an email. One of our technical experts will help find the perfect sound solution for you. Here are a few basic specifications we'll work with you to define:

- Sound Characteristics
- Dimensional Specifications
- Termination Preferences
- Mounting Options
- Power Requirements
- Use Conditions

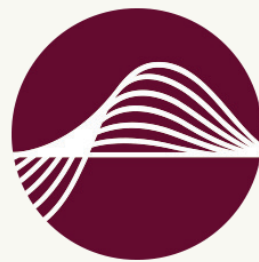
FOR MORE GREAT  
AUDIO PRODUCTS:

[puiaudio.com](http://puiaudio.com)



1202 E. Dayton Yellow Springs Rd,  
Fairborn OH, 45324

audio@puiaudio.com  
937.415.5901  
puiaudio.com



**PUIaudio**  
WHEN IT NEEDS TO BE HEARD